

THE WAR'S IMPACT



CHAPTER 7 SECTION 4

USH HONORS

1

Summarize the reaction in the United States to the perceived threat of communism.

2

Analyze the causes and effects of the quota system in the United States.

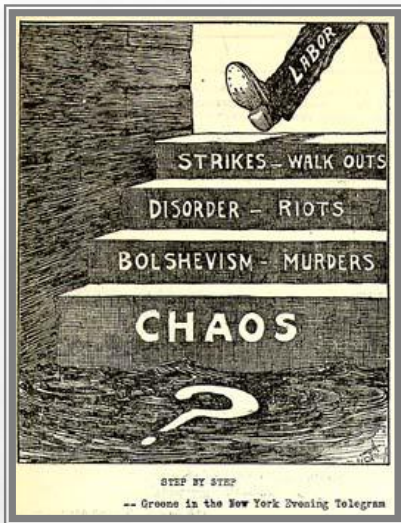
3

Describe some of the postwar issues and conflicts between labor and management.

LESSON OBJECTIVES:

AN ECONOMY IN TURMOIL

- **AFTER WWI ENDED, GOVERNMENTS STOPPED CONTROLLING THE ECONOMY**
- **HOW DID THIS IMPACT AMERICA?**
 - PEOPLE RUSHED TO PURCHASE GOODS
 - BUSINESSES RAISED PRICES – CAUSING INFLATION
 - THE COST OF LIVING INCREASED DRAMATICALLY
- **WHAT ELSE HAPPENED?**
 - FACTORIES LAID OFF WORKERS
 - RETURNING SOLDIERS STRUGGLED TO FIND WORK



INFLATION LEADS TO STRIKES

- **WHAT IS THE DIVIDE BETWEEN LABOR AND CORPORATIONS?**
 - WORKERS WANTED HIGHER WAGES
 - INFLATION WAS INCREASING OPERATING COSTS
 - UNION MEMBERSHIP INCREASED DURING THE WAR
 - FACTORIES WANTED TO BREAK UNIONS!



- **HOW DID STRIKES IMPACT AMERICA?**

- **SEATTLE GENERAL STRIKE:**

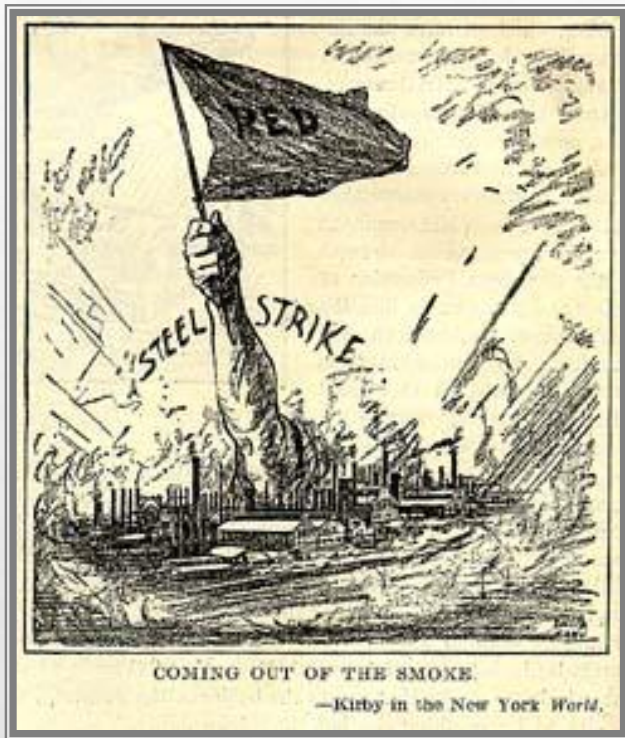
- 35,000 WALKED OFF JOB/DEMANDED INCREASED PAY.
- MORE UNIONS ORGANIZED A GENERAL STRIKE
- UNION ACTIONS CONCERNED MANY AMERICANS

- **BOSTON POLICE STRIKE:**

- 75% OF POLICE FORCE WALKED OFF JOB
- RIOTS/LOOTING FORCED GOV. COOLIDGE TO CALL IN THE NATIONAL GUARD
- POLICE COMMISSIONER FIRED THE STRIKING WORKERS

- **STEEL STRIKE:**

- 350,000 STEEL WORKERS (U.S. STEEL)
- HIGHER PAY, SHORTER HOURS, UNION RECOGNITION
- U.S. STEEL IMPACTED FOR 10 YEARS



NATIONAL GUARD 1919

*WHY DID THE
GOVERNMENT
REACT STRONGLY
AGAINST 1919
STRIKES?*



RACIAL UNREST

- **ECONOMIC PROBLEMS ALSO IMPACTED RACIAL UNREST**
 - AFRICAN AMERICANS MOVED NORTH TO FIND JOBS
 - RETURNING SOLDIERS STRUGGLED TO FIND WORK
 - 25 RACE RIOTS BROKE OUT: WORST RIOT IN CHICAGO
 - RIOTS LASTED FOR ALMOST 2 WEEKS
- **WARTIME STRUGGLES ENCOURAGED AFRICAN AMERICANS TO FIGHT FOR RIGHTS**
 - NAACP MEMBERSHIP INCREASED
 - CAMPAIGNS AGAINST LYNCHING – DEMANDING FEDERAL LAWS



Police & a soldier on guard in Chicago during 1919 riots



THE RED SCARE



Communism

Socialism

Capitalism

Advocates

Karl Marx
Friedrich Engels

Thomas More, Philippe
Buonarroti, Auguste Blanqui

Adam Smith

Business Ownership

Most businesses are owned and operated by the government

The government owns and operates major industries; individuals own small businesses

Individuals own and operate all businesses

Competition

NONE! Government owns and operates EVERYTHING

Restricted in major industries; encouraged in small businesses

Encouraged by market forces and government regulations

Profits

Excess income goes to the government

Profits earned by small businesses may be reinvested in the business – profits from government owned business return to government

Individuals are free to keep profits and use them as they wish

Product availability & price

Consumers have a limited choice – prices are usually HIGH!

Consumers have some choices – prices are based on supply and demand. Prices usually HIGH!

Consumers have wide choices – prices are based on supply and demand

Employment options

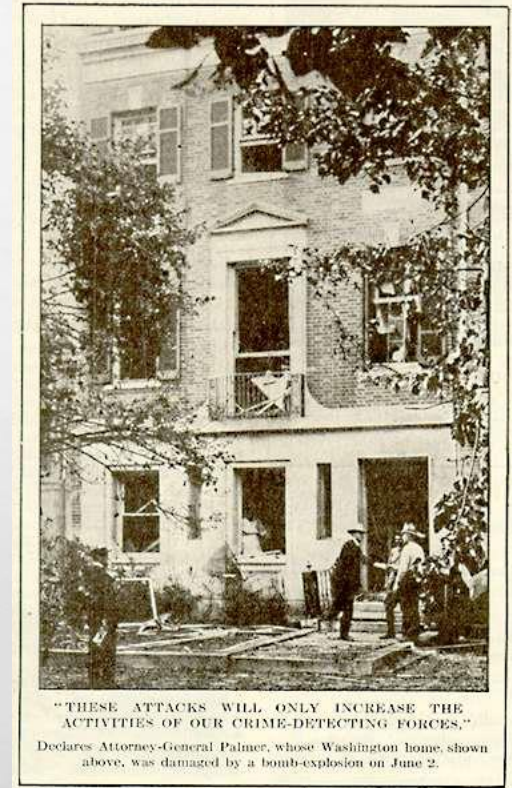
Most people work for the government – jobs assigned

Some career choice – many work for the government (assigned jobs)

Unlimited choice of careers

THE PALMER RAIDS

- **1880-1920: AMERICANS ACCUSED IMMIGRANTS OF IMPORTING SOCIALIST & COMMUNIST IDEAS**
 - BLAMED THEM FOR LABOR UNREST
 - BLAMED FOR VIOLENCE
- **WHAT HAPPENED TO INCREASE TENSIONS?**
 - **STRIKES OF 1919:** INCREASED FEARS & PANIC BEGAN
 - **APRIL 1919:** US POSTAL SERVICE INTERCEPTS BOMBS
 - **MAY 1919:** EUGENE DEBS (SOCIALIST LEADER) WAS JAILED – PROTESTS/RIOTS (2 KILLED)
- **HOW DID AMERICA RESPOND?**
 - ESTABLISH THE FEDERAL BUREAU OF INVESTIGATION (FBI)
 - PALMER ORDERED RAIDS IN 12 CITIES
 - 249 IMMIGRANTS DEPORTED



A. Mitchell Palmer's home with bomb damage

- **JANUARY 1920: THE FBI INVESTIGATED RADICAL ORGANIZATIONS**
 - 6,000 WERE ARRESTED – MANY DEPORTED
- **WERE THERE ANY LAWS PROTECTING IMMIGRANTS AT THIS TIME? NO!**
- **WHAT DID AMERICA THINK OF PALMER AND THE RAIDS?**
 - PALMER WAS A NATIONAL HERO – HE TOOK ON THE REDS!
 - WAS THERE A REVOLUTIONARY CONSPIRACY – NO EVIDENCE.
 - MANY STATES PASSED SEDITION LAWS AGAINST JOINING REVOLUTIONARY GROUPS
 - RADICALISM WAS DIRECTLY LINKED TO IMMIGRATION
 - AMERICAN CALLED TO LIMIT IMMIGRATION



Pres. Coolidge signs Immigration Act of 1924 on the South Lawn.

- **WHAT ISSUES WOULD DRIVE THE 1920 ELECTION?**

- ECONOMIC PROBLEMS
- LABOR UNREST
- RACIAL TENSIONS
- MEMORIES OF WORLD WAR I

- **WHO ARE THE CANDIDATES?**

- *DEMOCRATS:* JAMES M. COX AND FRANKLIN D. ROOSEVELT
 - PROGRESSIVE PLATFORM
- *REPUBLICANS:* WARREN G. HARDING AND CALVIN COOLIDGE
 - “RETURN TO NORMALCY”

