



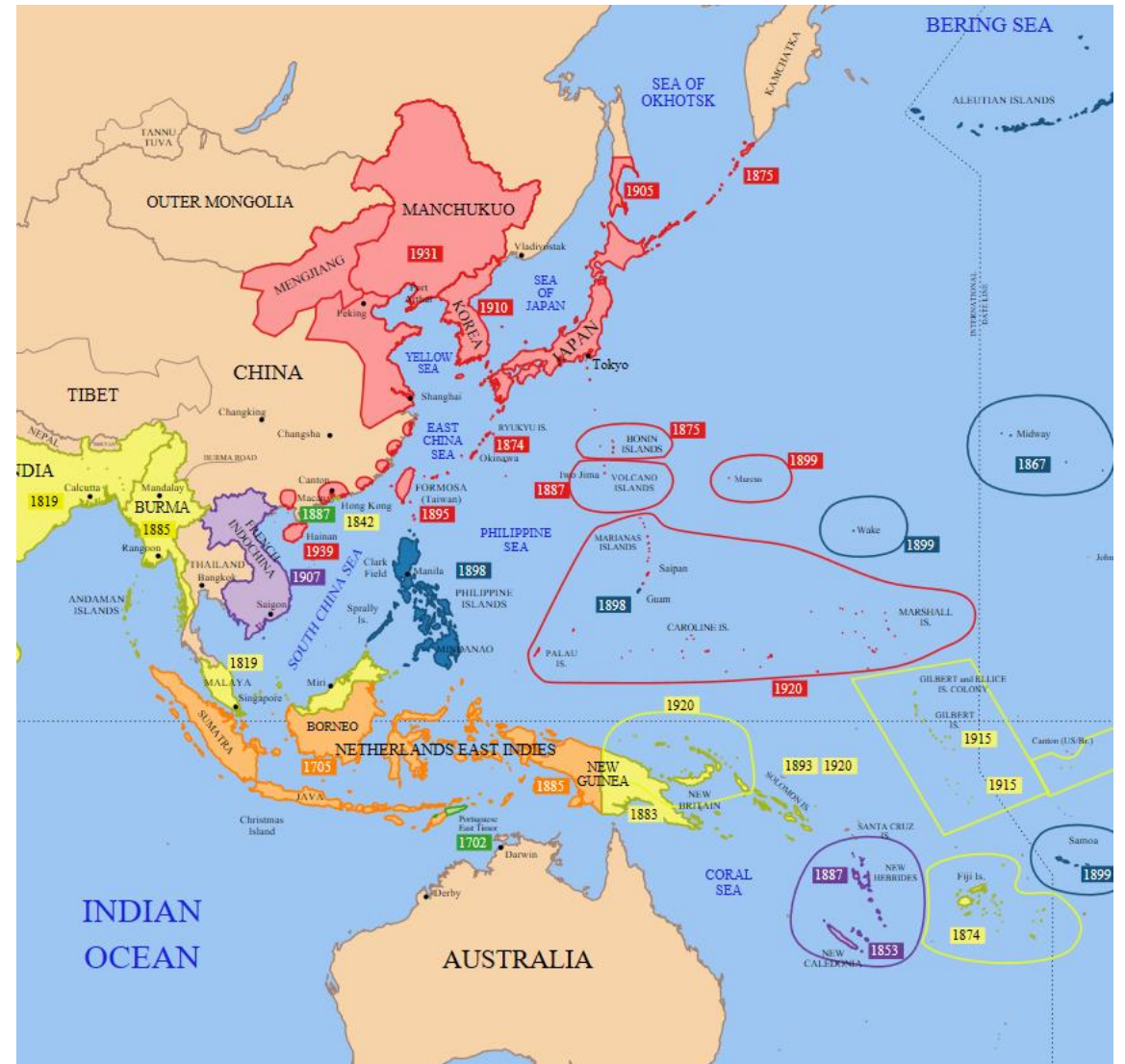
Japanese Aggression & Pearl Harbor

Chapter 11 Section 2

USH Honors

Causes of Aggression

- **How did Japan respond to the depression?**
 - Japan felt that expansion was the **ONLY** way they would survive.
- **What is Japan looking to gain? LAND & FOOD**
 - Japan was struggling to feed their people
- **What is the 1st step in Japanese aggression?**
 - September 1931: Japan occupied **ALL** of Manchuria.
- **Did the people support this move? YES!**



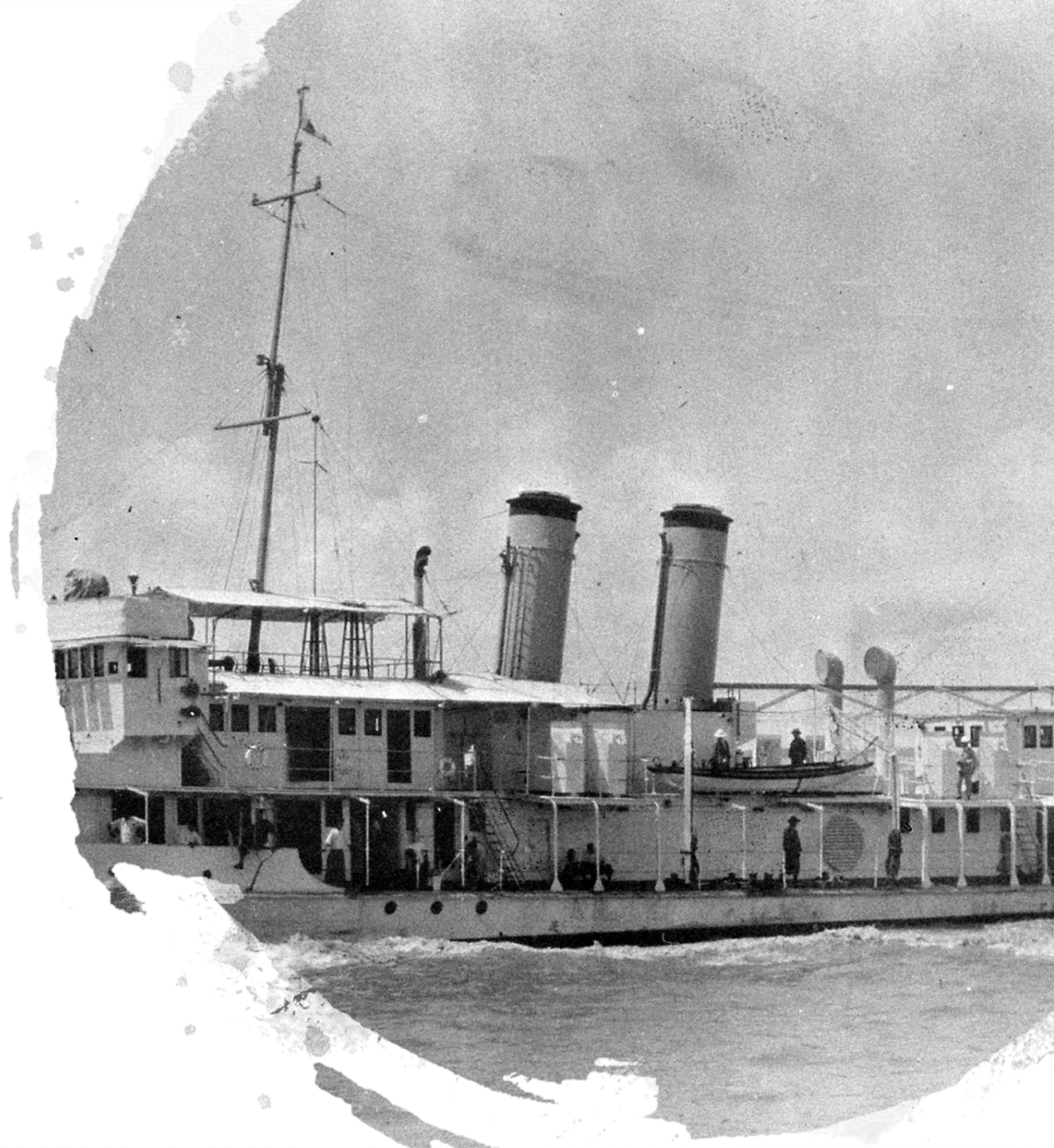
Invasion of China



- **When did China become a target? After the invasion of Manchuria!**
 - China had been involved in a bitter civil war between Communist and Nationalist forces.
 - The Chinese vowed to defend China if Japan attacked!
- **July 7, 1937:** war breaks out between Japan and China!
- **By August, the Japanese captured Nanking** (the Nationalist Chinese capital).
- **ALL** western treaties are now broken:
 - Four Power Treaty, Five Power Treaty, & Nine Power Treaty
- **July 1941:** Japanese forces enter Indochina and threaten the British Empire.

Impact on America

- **Japanese aggression directly affects the United States:**
 - The USS Panay was on routine duty in Chinese waters.
 - Japanese aircraft attacked the Panay
 - Japan was not ready to take on the growing American Navy!
- **How did the Japanese government respond?**
 - Apologized
 - Paid for all damages!
 - Promised to protect American nationals.





Roosevelt's Response...

- **How did Roosevelt respond to Japan's aggressive moves?**
 1. Roosevelt FROZE all of Japan's assets in the United States!
 2. America reduced ALL oil shipments to Japan
 3. Gen. MacArthur was sent to the Philippines
- **Roosevelt asked Congress for \$500 Million to increase America's military defense.**
 - Germany had begun its military rearmament program
 - European leadership surrendered the Sudetenland at the Munich conference
- **Roosevelt believed that Germany was a threat to the U.S.**
- **The Japanese saw this build up as a direct threat to their Empire**
 - America was the only country in the Pacific which could slow down Japanese expansion.

America Embargoes Japan

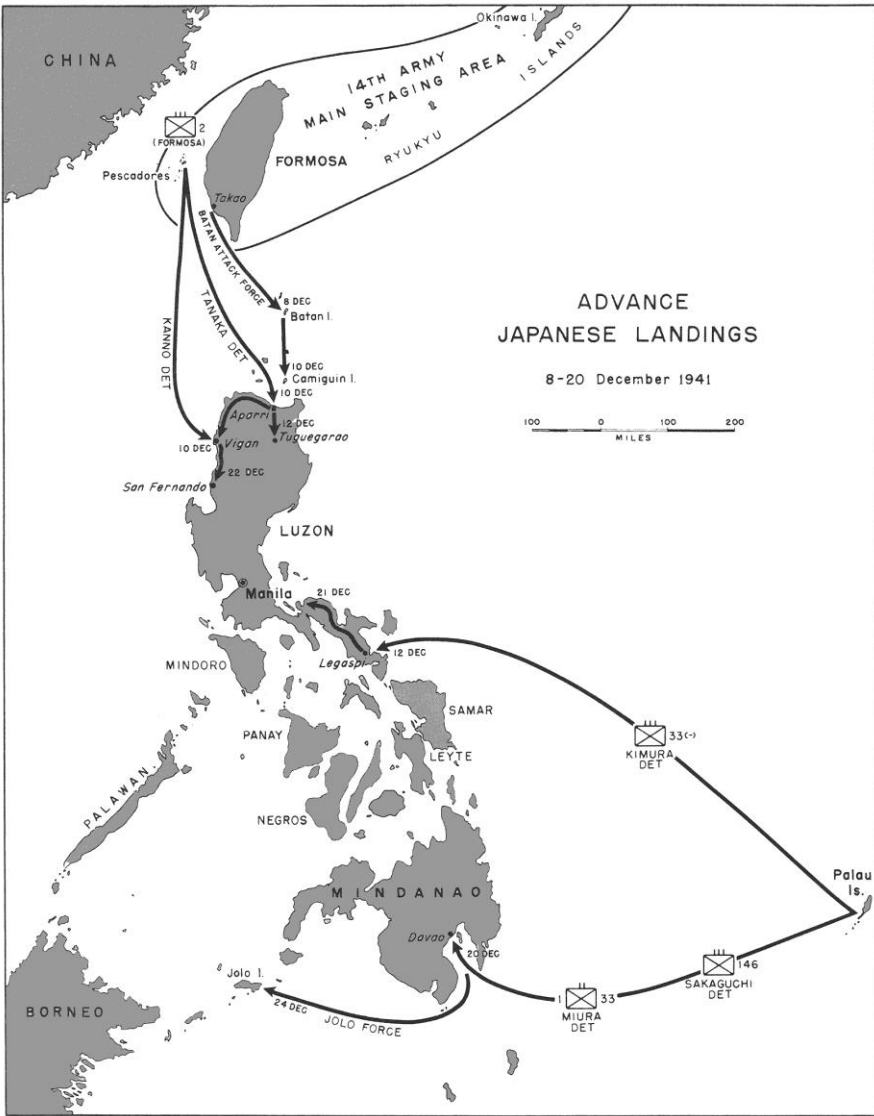


- **Britain prepared for war...**
 1. Moved warships from Southeast Asia to the Atlantic.
 2. India was left under colonial rule – vulnerable to Japan.
- **How did the US begin to support Britain – without breaking neutrality?**
 - Roosevelt applied an embargo on strategic materials: scrap iron, steel, and OIL!
 - The United States began to patrol the Pacific colonial possessions of Britain.
- **How did Japan respond? Tripartite Pact!**

Does the embargo work?

- **1941: Roosevelt sends Lend-Lease aid to China**
 - This would help China fight Japan – hopefully so America would stay OUT of war
- **Did the aid work? NO**
 - Japan invaded Indochina (French territory)
- **How did Roosevelt respond?**
 1. Freezing all Japanese assets in America
 2. Reduce oil shipments to Japan
 3. Send General MacArthur to the Philippines



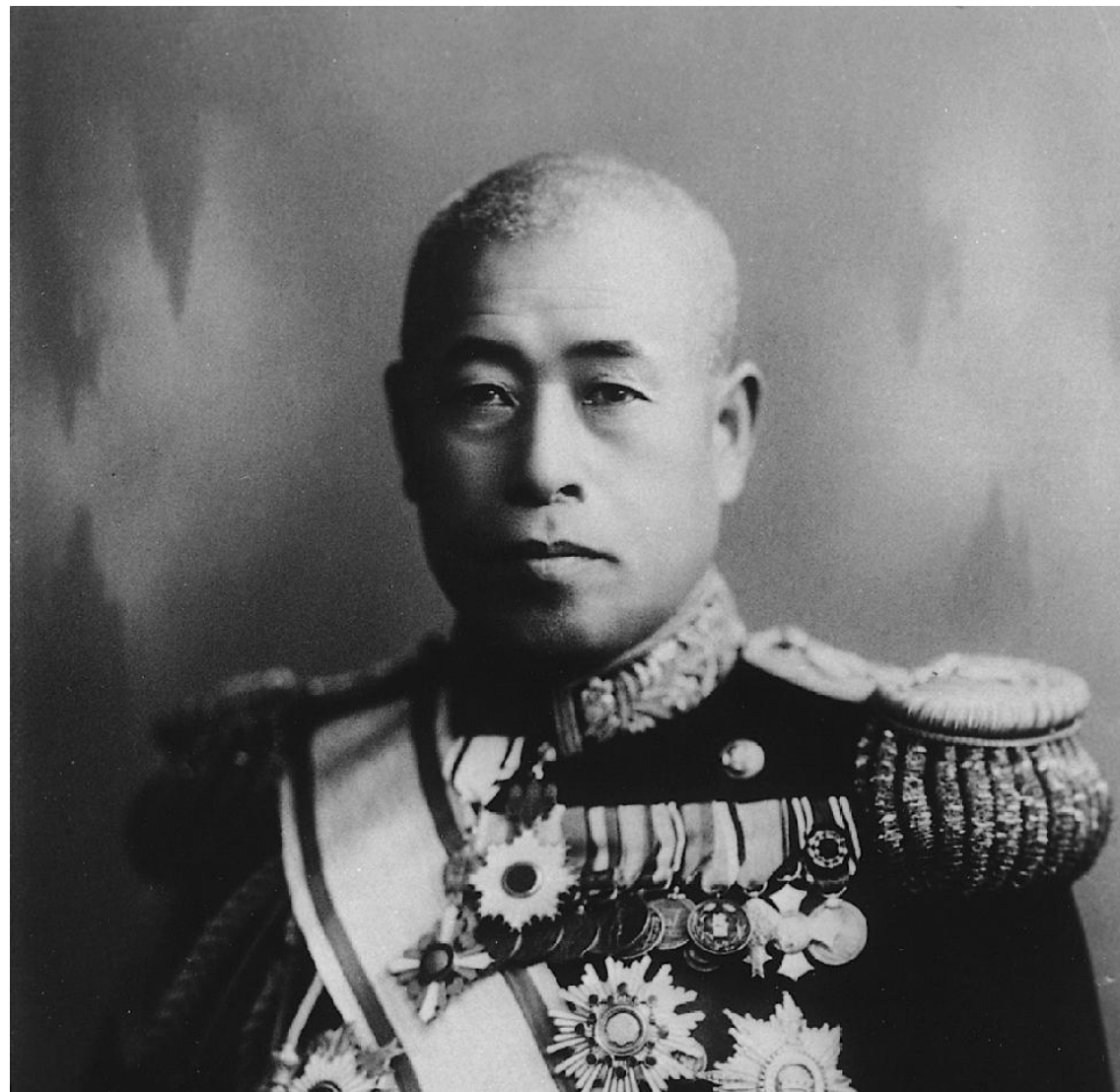


Decision to Attack...

- **Why did Japan choose to attack in 1941?**
 - America cut their supply of resources for war
- **What would Japan attack?**
 - British and Dutch colonies in Southeast Asia
 - American colonies and military installations
- **To prepare...**
 1. Continue negotiations for peace with America
 2. Plan the attack to gain territories

Admiral Yamamoto

- **Admiral Yamamoto assumed command of Japan's combined Fleet in August 1939.**
- **Yamamoto had lived in America for several years**
 - He had studied in the United States and had American friends.
 - He knew that this war plan was impossible.
- **He needed a plan that would remove the threat of American intervention from the outer limits of the Japanese Empire.**





Why Pearl Harbor?

- **Between January and March 1940, Yamamoto devised a plan to:**
 - destroy the U.S. Navy in Hawaii
 - undermine the confidence of the American people.
- **Was Pearl Harbor the ONLY target? NO!**
 - Japan planned to attack:
 - Malaya & Hong Kong (British)
 - Guam
 - The Philippines
 - Wake Island
 - Midway Island

US Territories

President Roosevelt December 8, 1941

**“Sunday, December 7th A date
which will live in infamy!”
~Franklin Roosevelt**

